

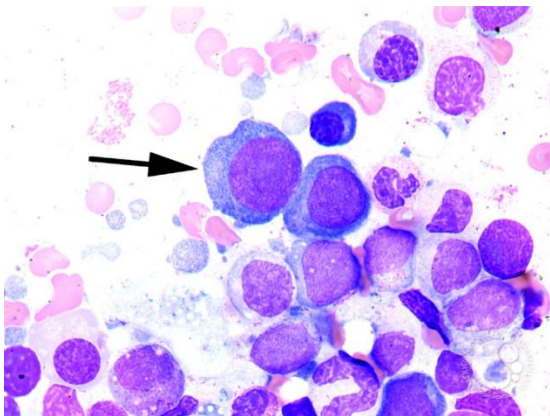
Q1: Mention the finding. How to confirm. What are complications.



Q2: X-ray finding. Mention clinical features and investigations.



Q3: Comment on this Bone Marrow picture. Enumerate causes.



Q4: What this picture is demonstrating. What other clinical features. How you can confirm the cause?



Q5: What this picture is demonstrating. Mention one cause.

